

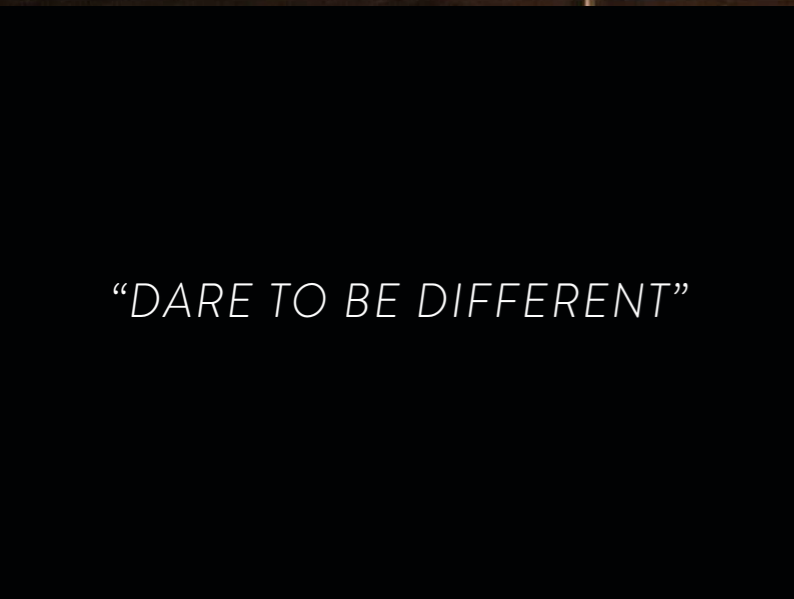
VISIONAIR-E

SMART DISPLAY SOLUTIONS

VISIONAIR-E



*“CUTTING EDGE
TECHNOLOGY”*



“DARE TO BE DIFFERENT”



“DARE TO BE UNIQUE”



SMARTER INTEGRATED TECHNOLOGY FOR THE HOME & BUSINESS

THE

VISIONAIR-E

GROUP

VISIONAIR-E

SMART DISPLAY TECHNOLOGY

“Visionair-e manufactures an innovative range of Optical Screens & Digital Signage Solutions which have been designed to advertise, inform & entertain”

VISIONAIR-E

SMART GLASS SOLUTIONS

“Having designed & developed a unique range of patented smart glass technologies over the last 20 years Visionair-e are now looking to expand the market across North & South America”

VISIONAIR-E

SMART DESIGNER FURNITURE

“The NEW ‘Limited Edition’ designer interiors range offers a number of unique , hand crafted pieces of smart furniture incorporating the very latest screen technology”

VISIONAIR-E

HISTORY

Paul Beswick, the founder and visionary of the Pro Display Group in the United Kingdom has established VISIONAIR-E in the USA, in response to a high demand for the very latest screen technology in North & South America.

Pro Display is an award winning technology company with a rich heritage of innovation in the visual display industry, this stretches right back to when the founder introduced the first full colour LED Screens into Europe in the early 1990's. Pro Display continues to make substantial investment in R&D, developing its range of optical screen, glass and film technologies.

PRO DISPLAY GROUP

PRODISPLAY

INTELLIGENT GLASS

OPTICAL SCREEN TECHNOLOGIES SWITCHABLE SMART GLASS TECHNOLOGY

intouch

Platinum Vision

TOUCH SCREEN TECHNOLOGIES

INTEGRATED DISPLAY SOLUTIONS

BRANDS & PATENTS

The Pro Display Group consists of a set of globally recognisable brands and technologies which sell to numerous industry sectors around the world. This includes the development by the founder of a number of 'patented' technologies and unique manufacturing processes for their range of switchable smart glass solutions.

DID YOU KNOW?

Pro Display have over 25 years worth of Research & Development experience in optical screen technology. Resellers and integrators specify our products for some of the world's leading brands:





DO YOU HAVE THE VISION?

VISIONAIR-E Group has been set up to support and develop new and existing markets within North America, South America and Canada. The companies head office & distribution centre is located in Palm Beach, South Florida.

VISIONAIR-E will offer a number of unique and exciting products within the following sectors-

Smart Display Technologies – projection screens, monitors & touch screen solutions

Our CEO / Founder has already designed and developed a complete range of award winning optical screen technologies and is now looking to take this one step further. In combination with many of our tried and tested products VISIONAIR-E will be introducing a number of NEW products and solutions including 4K outdoor TVs / cinema screens, transparent OLED solutions and a high-end 4K UST Laser projector for screen sizes up to 150”.

Smart Glass Solutions – retro fit switchable smart film and smart glass products

Having developed a unique and comprehensive range of patented smart glass technologies and solutions over the last 20 years, VISIONAIR-E is now looking to expand the market across North and South America . Our plan is to set up a comprehensive installer network covering a wide variety of industry sectors, which will include commercial, residential, retail, hospitality, healthcare and marine.

Smart Furniture – bringing future technology into your home and business today

The NEW ‘Limited Edition’ designer interiors range offers a number of unique, hand crafted pieces of furniture which will become an integral part of the design of your home or business. VISIONAIR-E’s smart furniture range incorporates the very latest technology, created for those who dare to be different and wish to show their own design flair and individuality in a world where image has become a way of life.



VISIONAIR-E

SMART DISPLAY TECHNOLOGIES

The VISIONAIR-E team has been involved in the design and development of optical screen technologies for more than 20 years. Having created a number of award winning products and solutions sold around the world.

SPECIALIST OPTICAL PROJECTION FILMS

Our specialist optical projection materials include a range of self adhesive films for front, rear and dual projection applications. VISIONAIR-E's optical films have been designed for a wide variety of applications which includes high brightness and sun viewable films for digital signage, high contrast films for video / home theatre and transparent films for holographic effects.

SPECIALIST OPTICAL PROJECTION SCREENS

VISIONAIR-E offers a complete range of rigid optical projection screens for front, rear and dual projection applications, which include Vision™ rear projection acrylic screens, Privado™ switchable glass screens, Geminivision™ dual projection screens and Digital Glass™ the world's largest rigid rear projection screens in sizes up to 315" x 118". Our front projection line up includes Laservision™ a transparent front projection screen and Eclipsevision™ a light rejecting screen technology for high ambient conditions, specifically designed for UST projection.

REFLEXIO™ MIRROR SCREEN TECHNOLOGY

Our mirror screen technology, Reflexio™ includes our standard range of 4K smart TVs and digital advertising monitors, retro fit mirror glass overlays to fit to any LCD / LED display and custom mirror video wall solutions.

HELIOS™ OUTDOOR SCREEN TECHNOLOGY

The Helios™ line up of high brightness screens includes a range of 4K outdoor TVs in screen sizes 43" – 86" and a selection of wall mount digital advertising screens and free standing kiosks.

EVOLVE™ TRANSPARENT LCD TECHNOLOGY

VISIONAIR-E provides a complete range of transparent LCD solutions including framed screen panels with media board/cables for simple integration into your own housing, screen sizes 9.7"–98". Alternatively for the complete solution you can choose one of our standard display cases in screen sizes 19" – 65" or we can offer custom built display housings for screen sizes up to 98".

AURORA™ TRANSPARENT OLED SCREENS

For the ultimate display technology we have Aurora™, this 55" transparent screen technology is a stand alone display requiring no back lighting system. Available as a table top display with minimal round base, interactive kiosk with free standing plinth (portrait) or video wall module for multi displays.

ALPHA™ MULTI-TOUCH SCREEN SOLUTIONS

The Alpha™ range of multi touch displays includes a number of monitor base solutions including both our mirror and transparent screen technologies. Other products include a 55" free standing kiosk, custom touch screen tables, retro fit interactive IR frames and PCAP interactive foils.



TYPICAL APPLICATIONS FOR OUR OPTICAL SCREENS

GENERAL AV



DIGITAL SIGNAGE



LEISURE



VISITOR ATTRACTIONS



BROADCAST



CORPORATE



VISIONAIR-E

SELF-ADHESIVE PROJECTION FILMS



REAR PROJECTION FILMS

Available in standard 16:9 screen sizes, standard roll lengths or per linear foot
Meteorvision™ (grey) high brightness film – roll width 60”
Onyxvision™ (black) high contrast film – roll width 60”
Quartzvision™ (clear) transparent / holo film – roll width 60”



DUAL PROJECTION FILM

Available in standard 16:9 screen sizes, standard roll lengths or per linear foot
Geminivision™ (off white) front or rear projection with an image on both sides
Roll width 65”





VISIONAIR-E

SELF-ADHESIVE FRONT PROJECTION FILMS



Laservision™ (clear) transparent / holo film – roll width 60”



Platinumvision™ (silver) high brightness film – roll width 70”



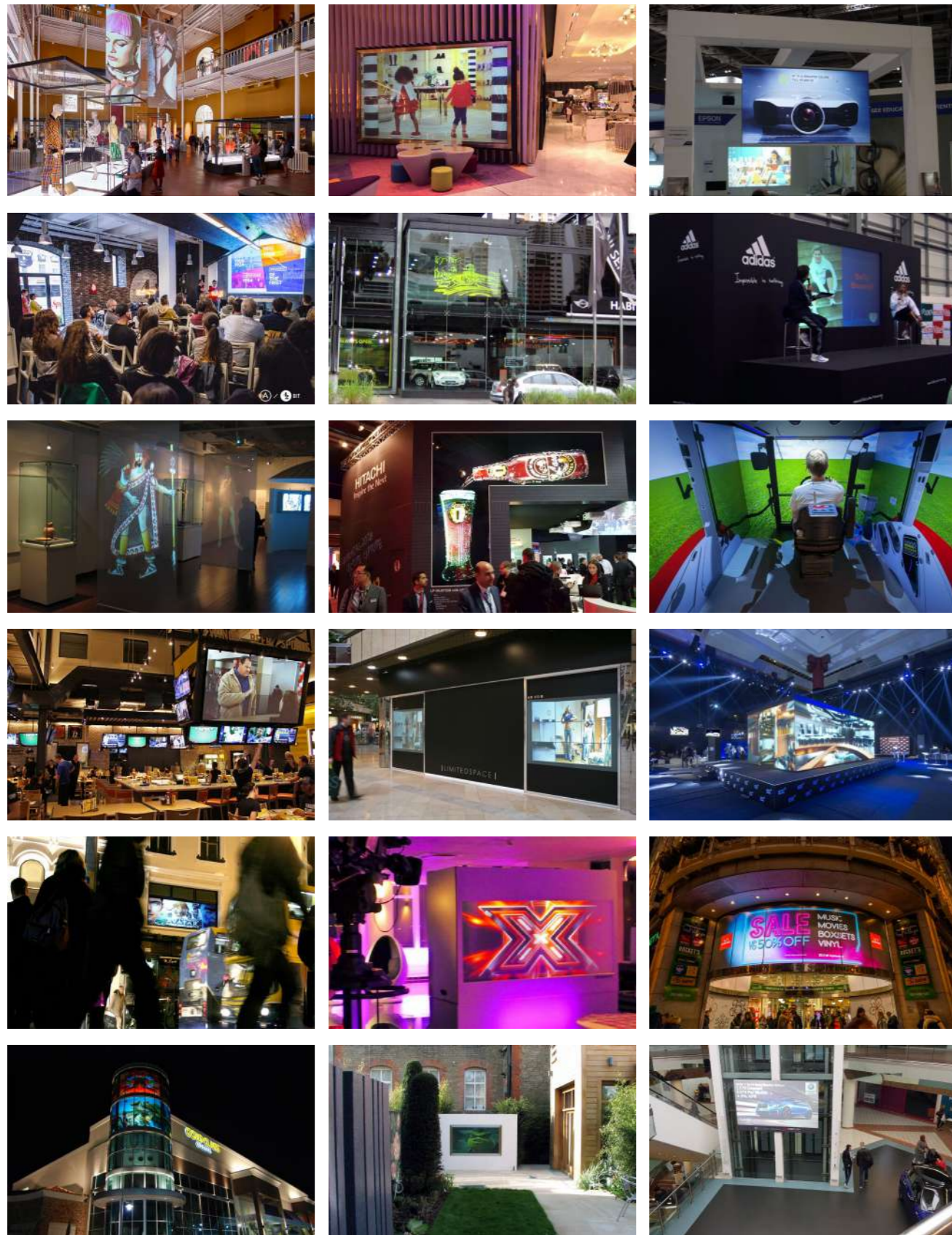
Lunarvision™ (off white) projection mapping film for glass – roll width 54”

Our films are available in standard 16:9 screen sizes, standard roll lengths or per linear foot

SELF-ADHESIVE PROJECTION FILMS | 13

INFO@VISIONAIR-E.COM | WWW.VISIONAIR-E.COM

VISIONAIR-E OPTICAL PROJECTION SCREENS



ACRYLIC REAR PROJECTION SCREENS



Meteorvision™ - grey high contrast optical acrylic screens ¼" (6mm) available in screen sizes up to 120" x 80"

LARGE FORMAT REAR PROJECTION SCREENS



Digital Glass™ - large format rear projection screens suitable for UST projection in screen sizes up to 315" x 118"

SWITCHABLE GLASS PROJECTION SCREENS



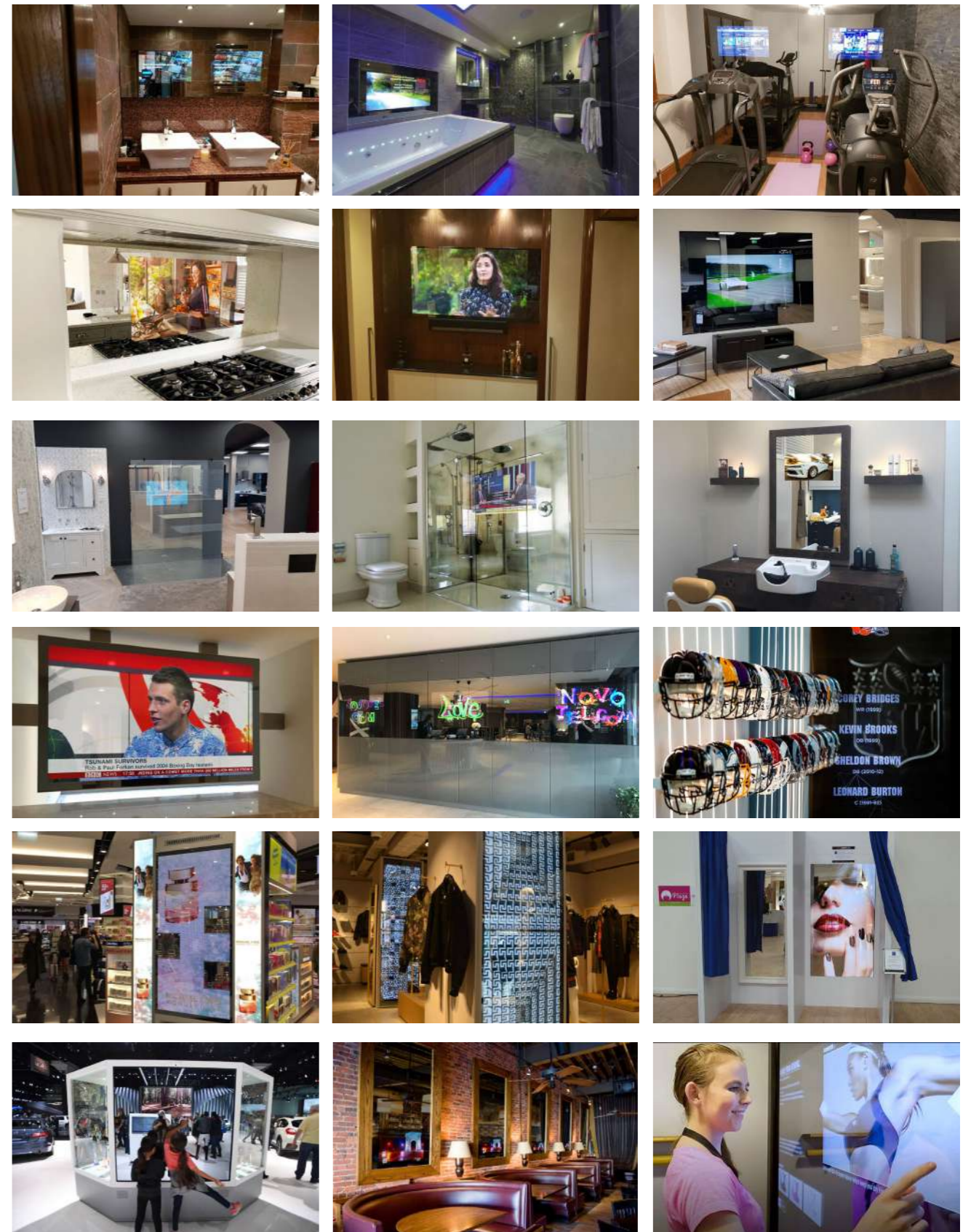
Privado™ - smart glass screens that switch from clear to frosted creating a high definition projection surface

TRANSPARENT / HOLO PROJECTION SCREENS



Quartzvision™ transparent rear projection acrylic screens 1/4" (6mm) available in screen sizes up to 120" x 80"
 Laservision™ transparent front projection screens in sizes from 55" - 122" (suitable for UST projection)

REFLEXIO™ MIRROR SCREEN SOLUTIONS



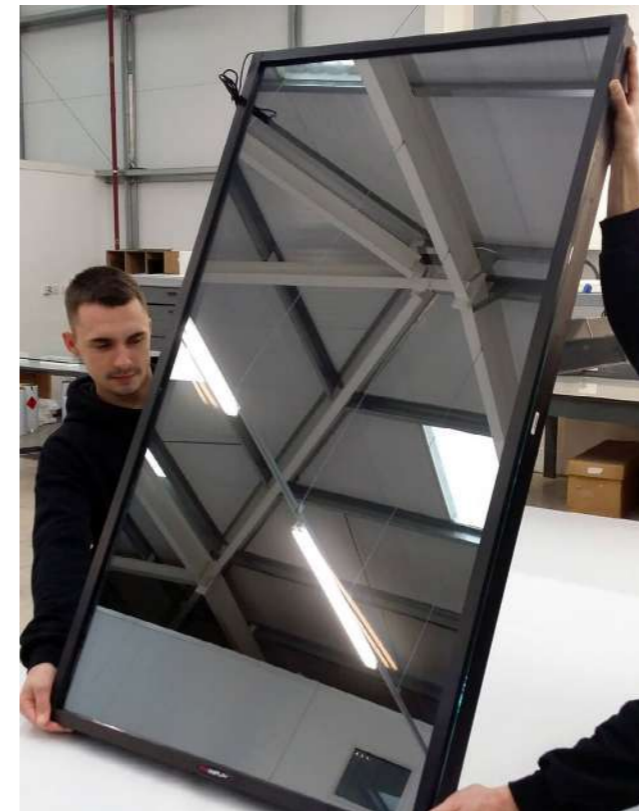
SHORT THROW FRONT PROJECTION SCREENS



VISIONAIR-E
 4K UST LASER PROJECTOR
 (Screen sizes up to 150")

Eclipsevision™ light rejecting screen technology for UST projectors – available as rigid screens and electric roll up screens

REFLEXIO™ MIRROR ADVERTISING SCREENS



Reflexio™ mirror advertising screens with built in media player, sizes 32" – 86" with optional multi touch fascia

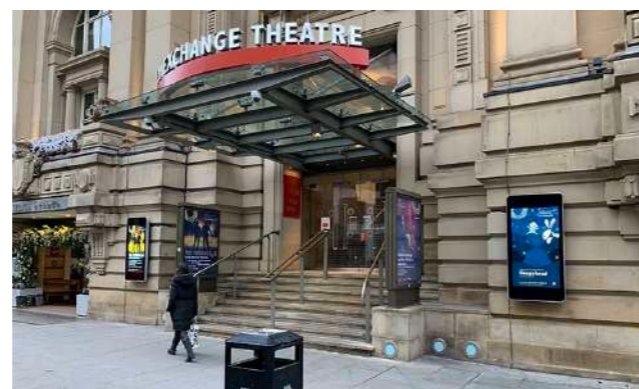
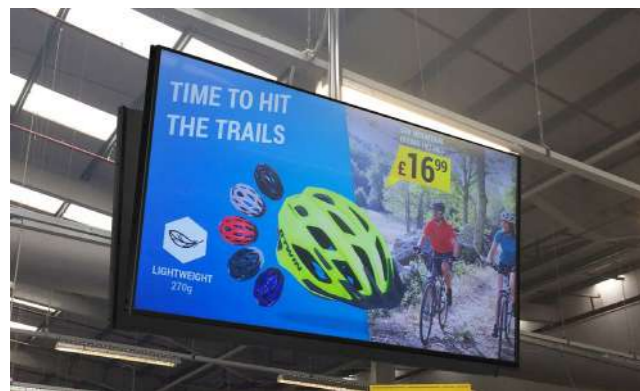


Reflexio™ retro fit mirror glass overlays suitable for all screen types and sizes – optional multi touch fascia

HELIOS™ OUTDOOR ADVERTISING SCREENS



Helios™ high brightness outdoor advertising screens and kiosks in screen sizes 43 – 98” (optional multi touch fascia)



EVOLVE™ TRANSPARENT LCD SCREENS



Evolve™ transparent LCD screens for integration into display housings and furniture, screen sizes available 9.7” – 98” (optional multi touch fascia)

EVOLVE™ TRANSPARENT LCD DISPLAY CASE



Evolve™ transparent LCD display case in sizes 19” – 65” with custom solutions up to 98” (optional multi touch fascia)

EVOLVE™ CUSTOM TRANSPARENT SOLUTIONS



AURORA™ TRANSPARENT OLED SCREENS



Aurora™ 55" transparent OLED screen with white designer base and mirrored trim (optional multi touch fascia)



Aurora™ 55" transparent OLED free standing kiosk (portrait) with PC compartment and PCAP multi touch fascia

Aurora™ 55" transparent OLED video wall kit (1 x 2 screens) with fixing frame (optional multi touch fascia)



ALPHA™ TOUCH SCREEN KIOSKS



Alpha™ 55" free standing kiosk with portrait multi touch display screen, built in PC and optional customised fascia

ALPHA™ TOUCH SCREEN DISPLAYS



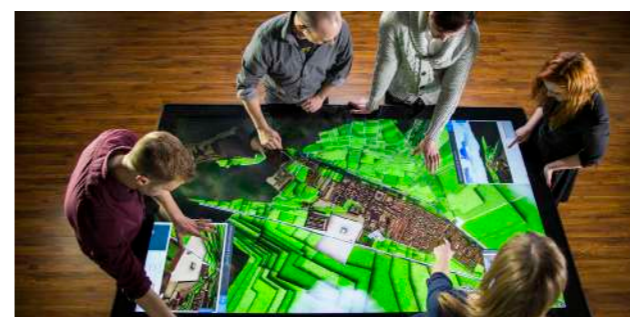
Alpha™ offers a complete range of indoor and outdoor multi touch screen monitors, tables and video wall solutions

ALPHA™ TOUCH SCREEN OVERLAYS



Alpha™ offers a range of retro fit IR multi touch frames up to 400" and PCAP multi touch foils in sizes 15.6" – 110"

ALPHA™ CUSTOM INTERACTIVE SOLUTIONS



VISIONAIR-E

SMART GLASS SOLUTIONS

HISTORY

The CEO / Founder of VISIONAIR-E has a long history in PDLC technology having developed a unique and comprehensive range of patented smart glass products and solutions over the last 20 years, VISIONAIR-E is now looking to expand the market across North & South America. Our plan is to set up a comprehensive installer network covering a wide variety of industry sectors, which will include commercial, residential, retail, hospitality, healthcare and marine.

INNOVATION

VISIONAIR-E are proud of their British heritage and dedicated to manufacturing the highest quality products. Based on the very latest polymer dispersed liquid crystal (PDLC) technology, switchable smart glass operates using a simple ON-OFF system, switching the glass from frosted to clear at the press of a button, acting as an electronic 'blind' creating privacy, security and energy efficiency in any environment. The applications for switchable smart glass technology are endless, from award winning architectural projects, to unveiling the world's most luxurious cars, we have seen our smart glass products become the perfect solution in a wide range of environments, including homes, businesses, leisure facilities, transportation and much more.

PRODUCTS

SELF ADHESIVE SWITCHABLE SMART FILM

Self adhesive switchable smart film is our most popular product, designed to retro fit to existing glass or other smooth transparent surfaces (acrylic or polycarbonate) it provides a simple and cost effective alternative to other switchable technologies. It is manufactured with a self adhesive cling layer on one side, making it easy to apply to both new and existing glass. For large windows & glass walls, the film can be joined to create a switchable surface for both privacy and security. The film is also a high definition projection surface to display video presentations and movies.

SINGLE LAYER LAMINATED SMART GLASS

Single layer laminated smart glass is our most cost effective switchable glass solution where the liquid crystal layer is coated down directly onto the glass surface. This means the PDLC layer can be coated onto different types and thicknesses of glass dependant upon the customer's needs and application, still offering the safety and security of a laminate at a much lower price. The glass is also a high definition projection surface to display video presentations and movies.

DOUBLE LAYER LAMINATED SMART GLASS

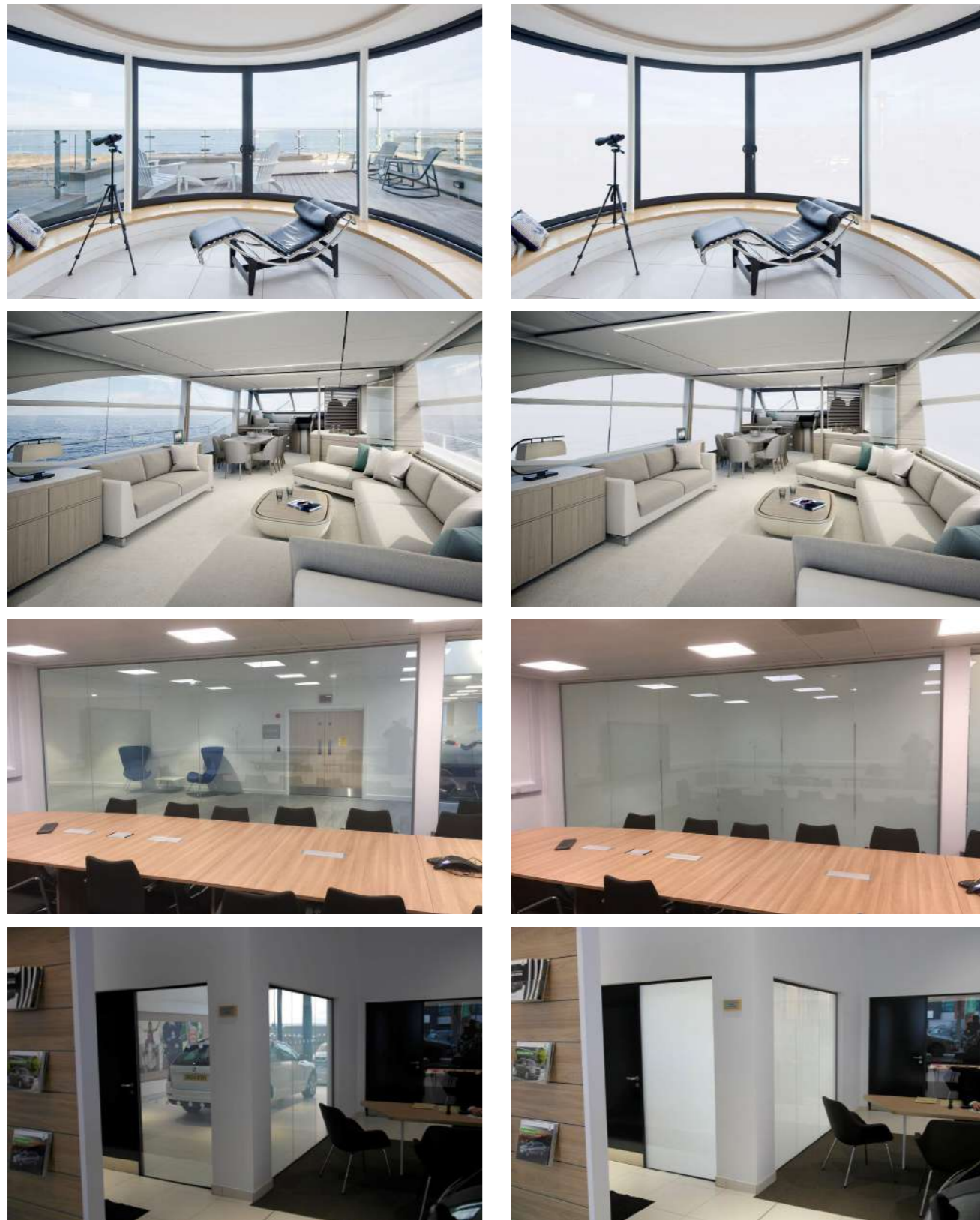
Double layer laminated smart glass is our most secure and durable smart glass product, designed for high traffic areas and wet environments such as bathrooms, hospitals, clean rooms etc. This type of smart glass is manufactured with the PDLC layer bonded between two sheets of glass, adding greater protection, increased safety and making it easier to clean / maintain in the workplace.

DOUBLE GLAZED INSULATED SMART GLASS

Double glazed insulated smart glass utilises a warm edge spacer bar and argon filled airgap in between two layers of glass - one layer with the PDLC coating and one clear glass, sealed with butyl. This type of smart glass provides greater insulation, performance and efficiency, designed mainly for external windows / doors it is the ideal alternative to old fashioned blinds and curtains.



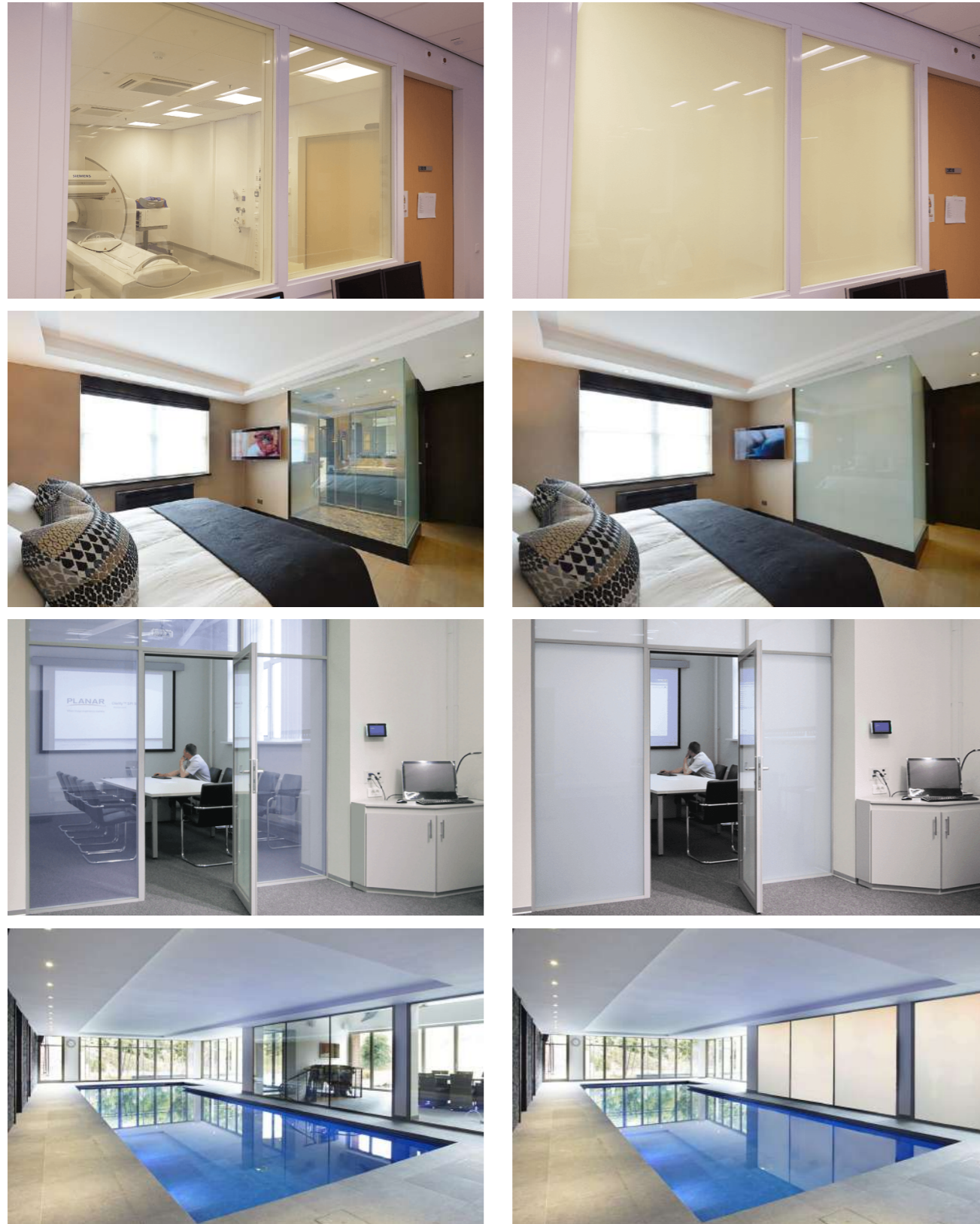
SELF-ADHESIVE SWITCHABLE SMART FILM



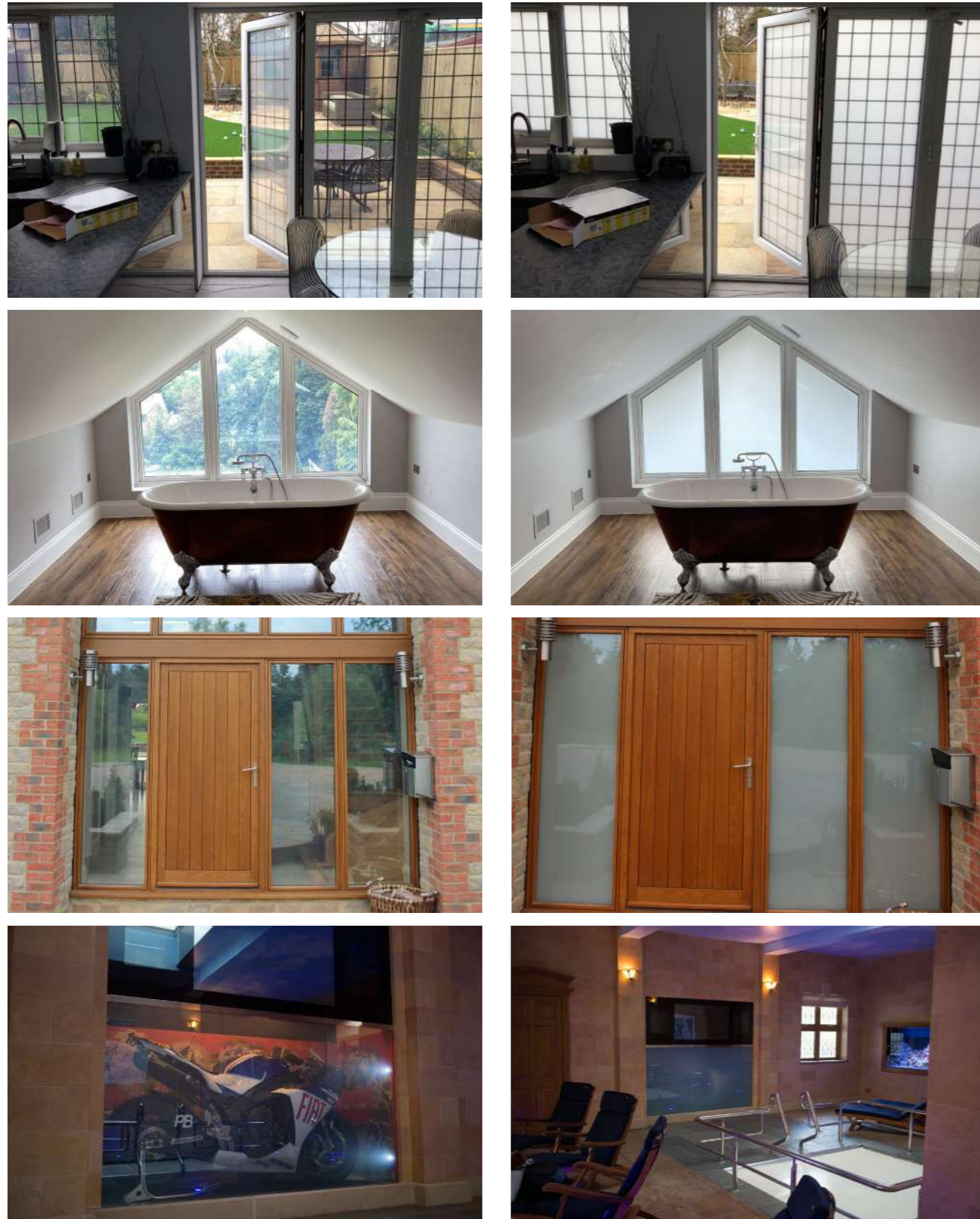
SMART GLASS - SINGLE LAYER LAMINATE



SMART GLASS - DOUBLE LAYER LAMINATE



DOUBLE GLAZED INSULATED SMART GLASS



SWITCHABLE GLASS FOR VIDEO PROJECTION





VISIONAIR-E

SMART DESIGNER FURNITURE

VISIONAIR-E are launching a NEW range of 'Limited Edition' smart furniture, individual named and numbered pieces which will feature a number of unique designs and incorporate the very latest screen technology. Designer hand crafted pieces of furniture that will become an integral part of the design of your home or business. This product range is the brain child of our CEO / Founder and has been created for those wishing to show their own design flair and individuality in a world where image has become a way of life.

Call for details today and 'Share In Our Vision'

DID YOU KNOW?

You the customer can be involved in the style and design of each piece of smart furniture by choosing from a variety of colours, textures and finishes.

Colours, designs and swatches available – be as creative as you like.



"CUTTING EDGE TECHNOLOGY"

"DARE TO BE DIFFERENT"

"DARE TO BE UNIQUE"

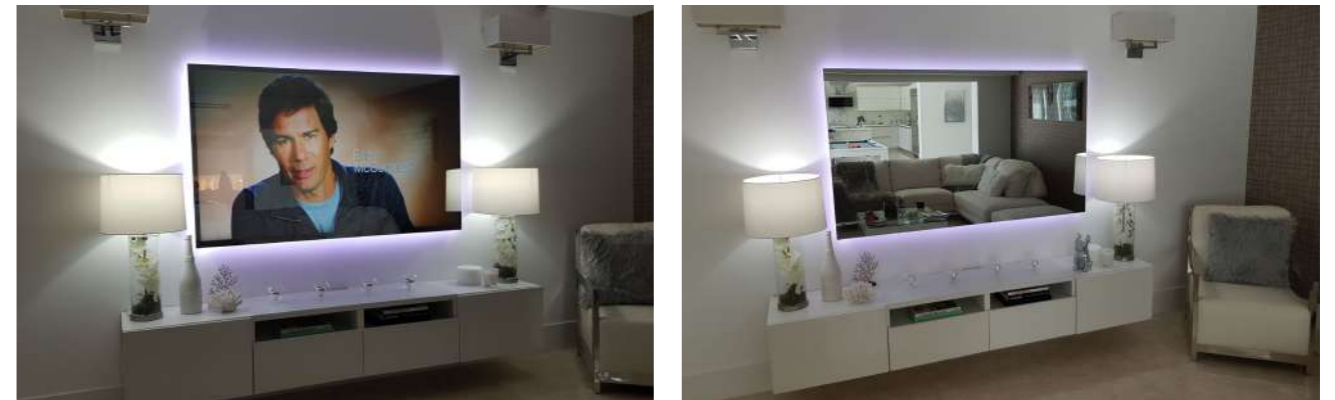


VISIONAIR-E

SMART DESIGNER FURNITURE



REFLEXIO™ SMART MIRROR TV SCREENS



Reflexio™ 4K smart TVs with optional frames and back light – screen sizes 43", 55", 65" and 75"

PORTIA™ FULL LENGTH MIRROR TV



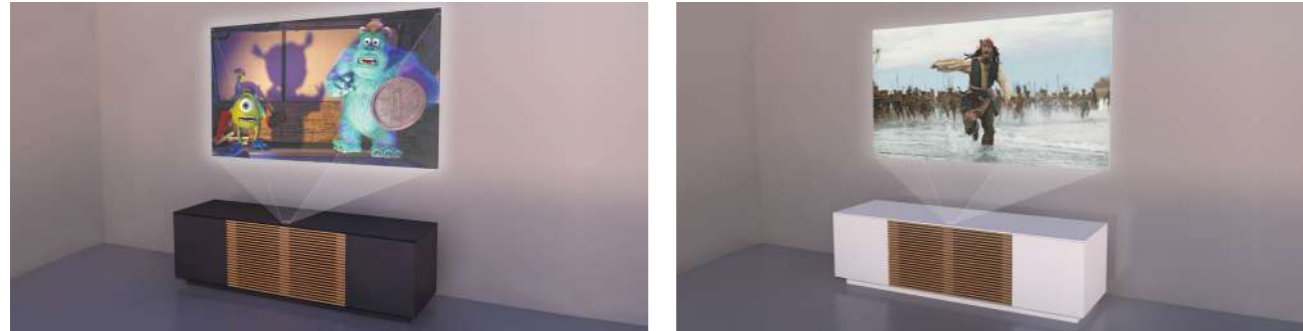
Portia™ full length mirror TV with integrated 4K smart TV – screen size 43"

PROSPERO™ DESIGNER MIRROR TV CABINET



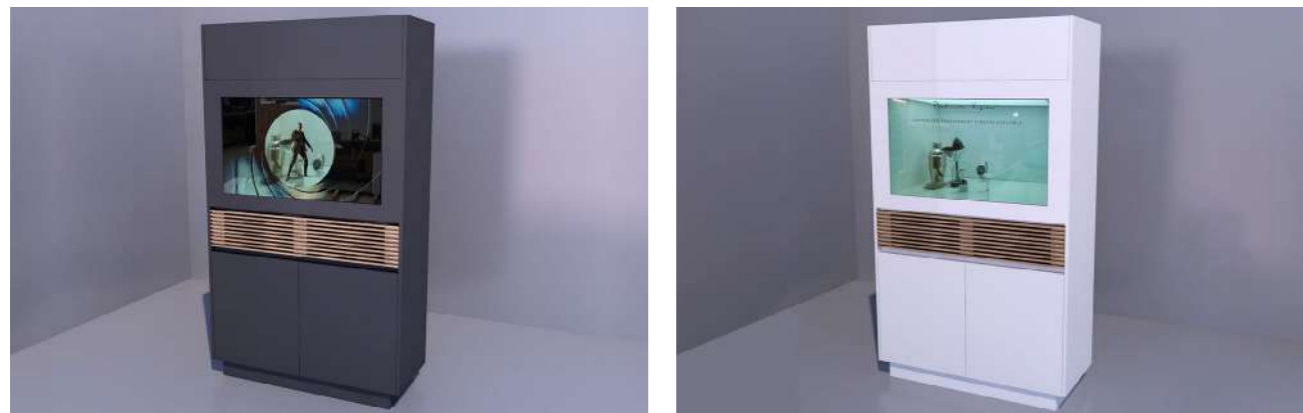
Prospero™ designer mirror TV cabinet with integrated 4K smart TV – screen size 55"

PROTEUS™ 120" LASER CINEMA SYSTEM



Proteus™ designer projection cabinet with 4K Laser Cinema System and light rejecting screen technology

PANDORA™ TRANSPARENT TV CABINET



Pandora™ designer cabinet with integrated transparent LCD display case – screen size 43"

TITAN™ TRANSPARENT OLED TV CABINET



Titan™ designer TV cabinet with automated lift mechanism for our 55" transparent OLED display

TARVOS™ DESIGNER TOUCH SCREEN TABLE



Tarvos™ designer touch screen table with floating glass legs and integrated 50" multi touch display / PC

HELIOS™ 4K OUTDOOR TVs AND CINEMA SCREENS



Helios™ outdoor high brightness 4K smart TVs in screen sizes 43", 55", 65", 75" and cinema screens 86" and 98"

GLOBAL HEADQUARTERS

Palm Beach
South Florida
USA

Email: info@visionair-e.com

WWW.VISIONAIR-E.COM

THE
VISIONAIR-E
GROUP

© Copyright 2021